

4SEE INSIGHTS AT YOUR FINGERTIPS



DRIVERS

The 4SEE app is specifically designed to provide your drivers access to all the data from the trailer when and where they need it. To improve safety, it will notify them if a component on the system has an alert or event that needs to be addressed to keep the trailer on the road and keep drivers safe.

FLEET MANAGEMENT

The 4SEE web interface puts the data you need for fleet management in a clean, modern interface. You can view, update and report on the data being received through the cellular connection. In addition, 4SEE by Grote provides APIs for partner data sharing so you can integrate the data into your existing services. And, we have you covered for security by encrypting all data outside of the J1939 communications.

Trailer ID	Region	Location	Type	Commissioned	Last Status	Last Status Date	Notes	Locate	Active
A31856	E-AL3320		Dry Freight Trailer	2022-08-04 12:36 PM EST	OK	2022-08-04 01:39 PM EST		📍	☑️
A31857	E-AL3320		Dry Freight Trailer	2022-08-04 03:39 PM EST	OK	2022-08-04 05:32 PM EST		📍	☑️
US555	E-009A03		Dry Freight Trailer	2022-05-13 09:36 AM EST	Low Tire Pressure	2022-05-24 12:06 PM EST		📍	☑️
US556	E-072B19		Dry Freight Trailer	2022-05-13 09:34 AM EST	OK	2022-08-04 09:08 PM EST		📍	☑️
US219	E-008F76		Dry Freight Trailer	2022-05-13 09:35 AM EST	OK	2022-05-24 12:05 PM EST	Rear Left Stop Turn Tail replaced 6/23	📍	☑️
US315	E-56A10C		Dry Freight Trailer	2022-05-13 09:36 AM EST	Lamp Outage	2022-05-24 12:05 PM EST		📍	☑️
US480	E-FA0E79		Dry Freight Trailer	2022-05-13 09:36 AM EST	OK	2022-05-24 12:05 PM EST		📍	☑️

- Ability to offer insights as needed; Real-time alerts, scheduled reporting, or on-demand/ad hoc.
- Ability to view 3rd party data in one platform
- Multi-purpose app; built for drivers, maintenance, and installers.
- Over 100 unique data points available at anytime via alerts and reporting.

3RD PARTY INTEGRATIONS



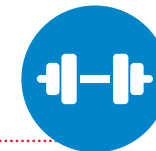
ABS – Connecting with the digital end of the ABS system enables streamlined data communication about telematics, brake wear, or any other available ABS data.



Surround Camera – The surround camera system gives you an informed purview of the inside and outside of your trailer.



Radar – 4SEE adds a new layer of safety not previously available on trailers with radar positioning. It can identify and alert you to objects in immediate proximity to the trailer, even providing a blind spot indicator light to warn drivers of vehicles and obstacles they can't see.



Weight– Full integration to a trailer's weight.



TPMS – Real-time tire monitoring allowing for the fleet to maximize uptime.



Cargo/Door – In addition to monitoring when a trailer's door opens and closes, it can monitor cargo status to help reduce manual yard checks.



4SEE Lights – A new Grote innovation for 2024 that integrates into our 4SEE smart system. Smart lamps are digitally controlled, fully customizable, and multifunctional lamps that will monitor specific lamp health, voltage, hours illuminated, and temperature. For an additional level of safety, lights are programmed for strobe/beacon functionality.

With 4SEE by Grote, you aren't tied to one set of hardware. We have you covered with the connectivity you need for the systems you rely on to keep you informed and to improve safety. We are working with a variety of 3rd party hardware providers to ensure you can connect devices to your 4SEE system.

A VISION FOR SAFETY & ROI



SCAN FOR INTERACTIVE EXPERIENCE



SCAN FOR INTERACTIVE EXPERIENCE



Wired For Success.

Grote Industries, Inc.
2600 Lanier Drive
Madison, Indiana 47250
USA
56-9513-56

Phone: 812-273-1296
Phone: 800-628-0809
Fax: 812-265-8440
4See.grote.com

©2024 Grote, Inc.

Grote.com/4SEE

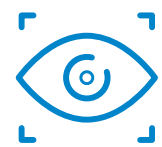
THE NEWEST INNOVATION

4SEE® by Grote is the newest innovation in the trailer space.

With its unique hardware and software ecosystem approach, 4SEE is designed to maximize safety, security, efficiency and cost savings.

Modular. Expandable. Flexible.

Ready for the future. Starting with 4SEE Insight, our exclusive nose box, and moving to our 4SEE Digital Harness, combined with our 4SEE Secure adapters and 4SEE Light smart lamps, Grote has the right system to connect you to the future, now.



Safety



Security



Efficiency



Cost Savings

4SEE INSIGHT SMART NOSE BOX

You want to be able to see all that is happening with your trailer, and 4SEE Insight puts you in the driver's seat by combining all tractor power inputs into a high voltage power supply that's prewired for easy installation. It's designed for connectivity, so you can interface with it through both cellular and Bluetooth connections. Information recorded by the nose box is sent to the cloud as well as the driver app. In addition, it has internal memory provided by an SD card to act as a "black-box" safety feature.

And it's not only ready for today's technology but also for future industry advances in telematics, smart sensors, and even connectivity upgrades, with 5G-ready connections.

You can rely on 4SEE Insight even in the toughest conditions. Rated at IPx9K, this nose box is weatherproof, heat resistant, and chemical resistant. And because you need insight into your trailers even when they are not connected to the tractor or shore power, a high-capacity internal battery allows for status pings any time you need it.



- 2 plug-and-play connections for simple installation
- QR code for easy pairing to the mobile app
- J1939-compliant communication
- Multiple functions in one box: nose box, timer, telematics
- Easy and sturdy connections with over-molded Molex MX 150 connectors
- Battery allows for daily status pings even when untethered
- SD data storage to act as a data recording device
- No need to open the box except for battery replacement about every 5 years

4SEE DIGITAL HARNESS

You need complete access to all the data on your trailer 24/7/365, and the 4SEE Harness delivers. It's a 4-conductor, 48v system containing two buses: one power and one CAN bus. You can connect over 30 nodes, including lamps, sensors, and adapters, allowing for a fully connected trailer. And because it's a wired system, there are no connection hassles; it just works.

Designed to last 20 years through the harshest environments, it has a sleek form factor with 4 wires (2 twisted pairs) to make the cable small and flexible. With its locking push connector, it is easier to connect than a greased connection and more reliable.

We know every pound counts in your business, so the weight reduction of this design can provide fuel savings while still providing the durability and reliability you can depend on.

4SEE SECURE

Grote's exclusive 4SEE Secure converter modules will convert all other communication protocols to J1939 standard communications. Whether it's a legacy, digital, bi-color, or analog converter, it will also ensure that all items have an independent communication stream that does not interfere with other hardware in the system.



- Modular and future-ready, including 5G compatibility
- Customizable, allowing for adding accessories without re-wiring or splicing
- Streamlined end-to-end J1939 connection to each piece of hardware
 - Heavy-duty, locked connection points
 - Universal for all trailer configurations
 - No grease for connections



Wired For Success.